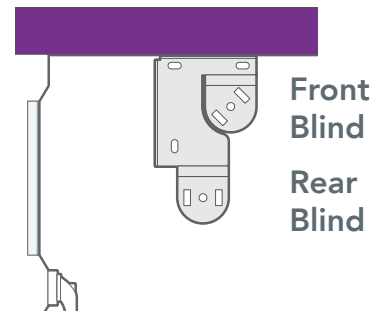


**Before you begin**

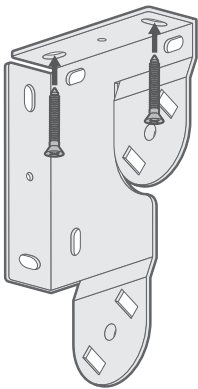
The front blind should be the one highest and closest to you, so make sure that when marking out where to put your brackets you have one round section pointing toward you and the other pointing down.



**Fitting the brackets**

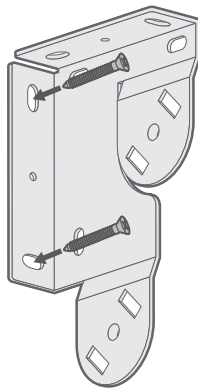
**1**

The brackets offer three methods of installation:



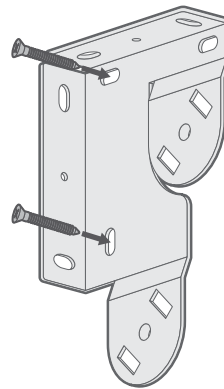
**Top-Fixing**

Where the brackets are screwed into the lintel (or 'ceiling' of the recess)



**Face-Fixing**

Where the brackets are screwed onto a facing surface (a wall or window frame)



**Side-Fixing**

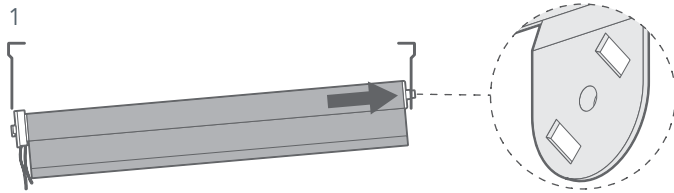
Where the brackets are screwed into the side walls of the recess

**Top Tip**

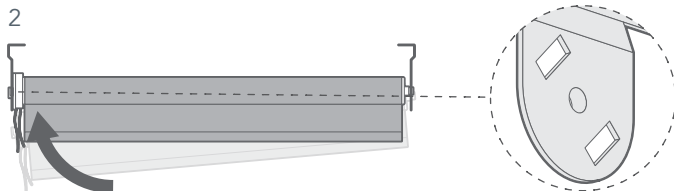


Top-fixing or face-fixing are recommended for most installations, whereas **side-fixing is only recommended if the width you gave us was taken right at the top of the recess.**

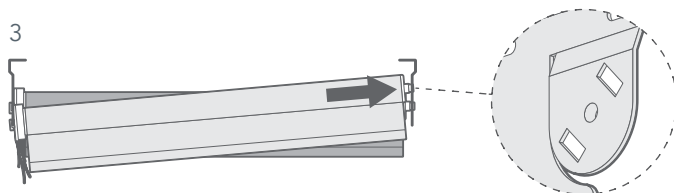
**Fitting the blind**



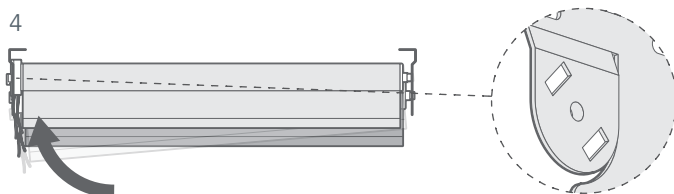
Install the rear blind first. Begin by placing the spring-loaded pin into the lower circular hole on the bracket. Push the blind toward the bracket so the spring-loaded pin depresses.



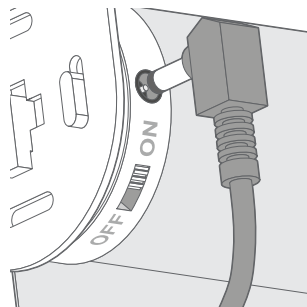
Keeping the pin depressed, lift the motor end of the blind upwards so the blind is level. Slot the pegs on the end of the motor into the rectangular slots on the bottom part of the bracket.



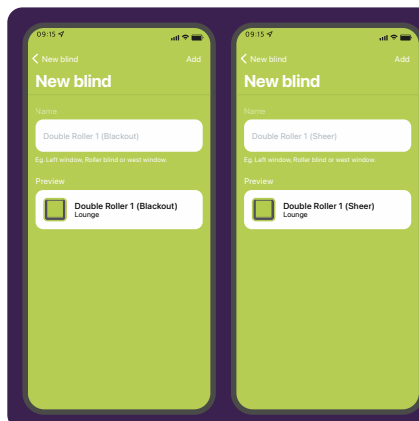
Repeat the process for the front blind, placing the pin into the circular hole on the upper part of the bracket and lifting the motor side up to slot into the rectangular slots in the upper part of the opposite bracket.



Once your blinds are installed we recommend plugging in the motor for each, to allow it to fully charge before use. Plug the charging cable (included) into the motor charging port and allow to charge until the LED on the charger plug turns green.



On the front of the swing tag that comes with each blind, you'll find a handy QR code you can scan with your phone. Scan this to download the SmartView app - you'll be setting up your blinds in moments!



**Top Tip**

When scanning your blinds into the app, each blind from a pair will be scanned separately.

You may find it helpful to name your blinds in such a way that it's obvious which blinds are part of which pair.

Recycle your electrical and electronic devices free at your local recycling centre. To find your nearest centre, visit the [Recycle More](#) website and type in your postcode.



Blinds 2go Ltd is part of the DTS scheme.